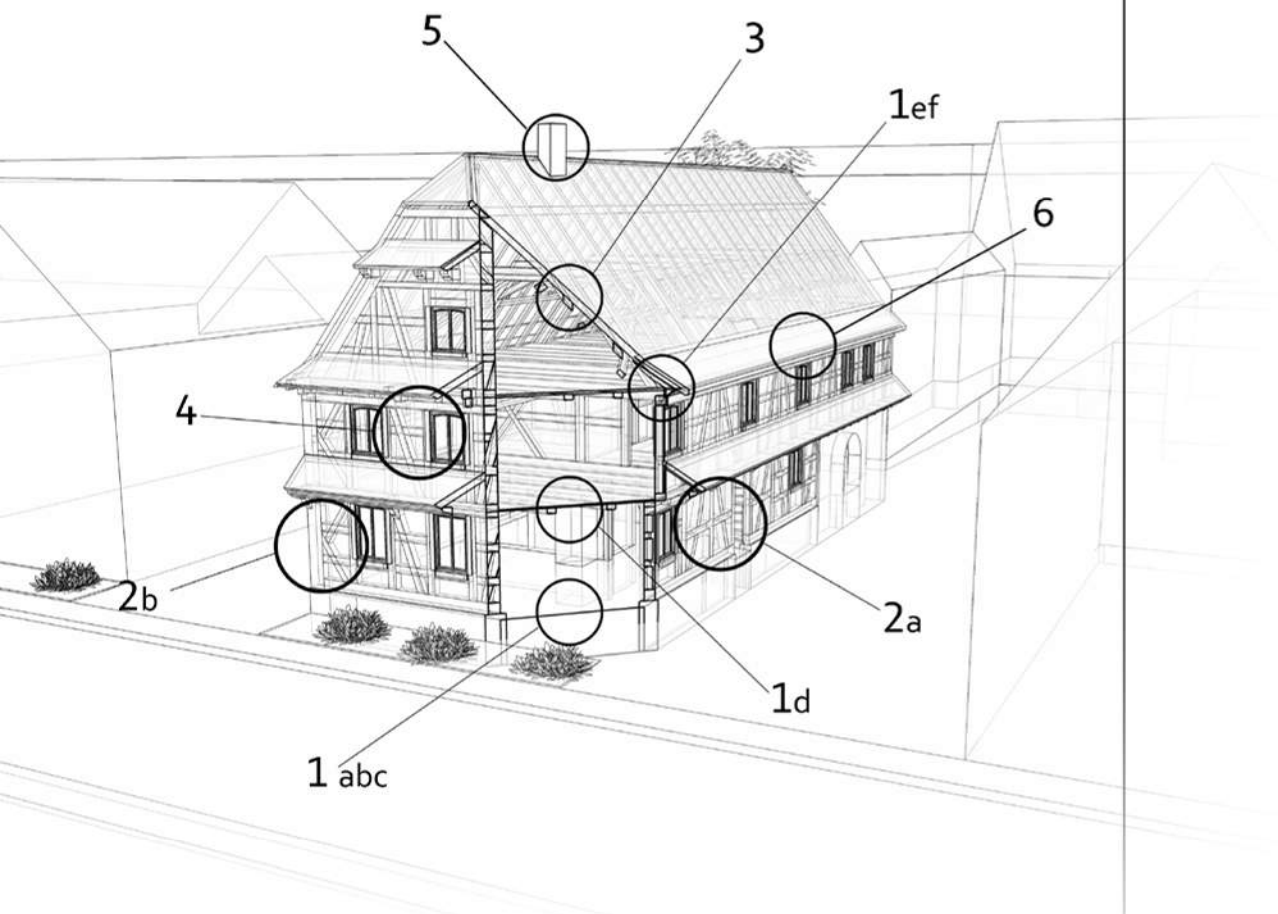


# CARNET DE DETAILS

Maison de HUNSPACH

La maison cour / maison fermée en pan de bois

## SOMMAIRE



1- Dalles et planchers

2- Murs

3- Ouvertures

4- Cheminée

édition 2014

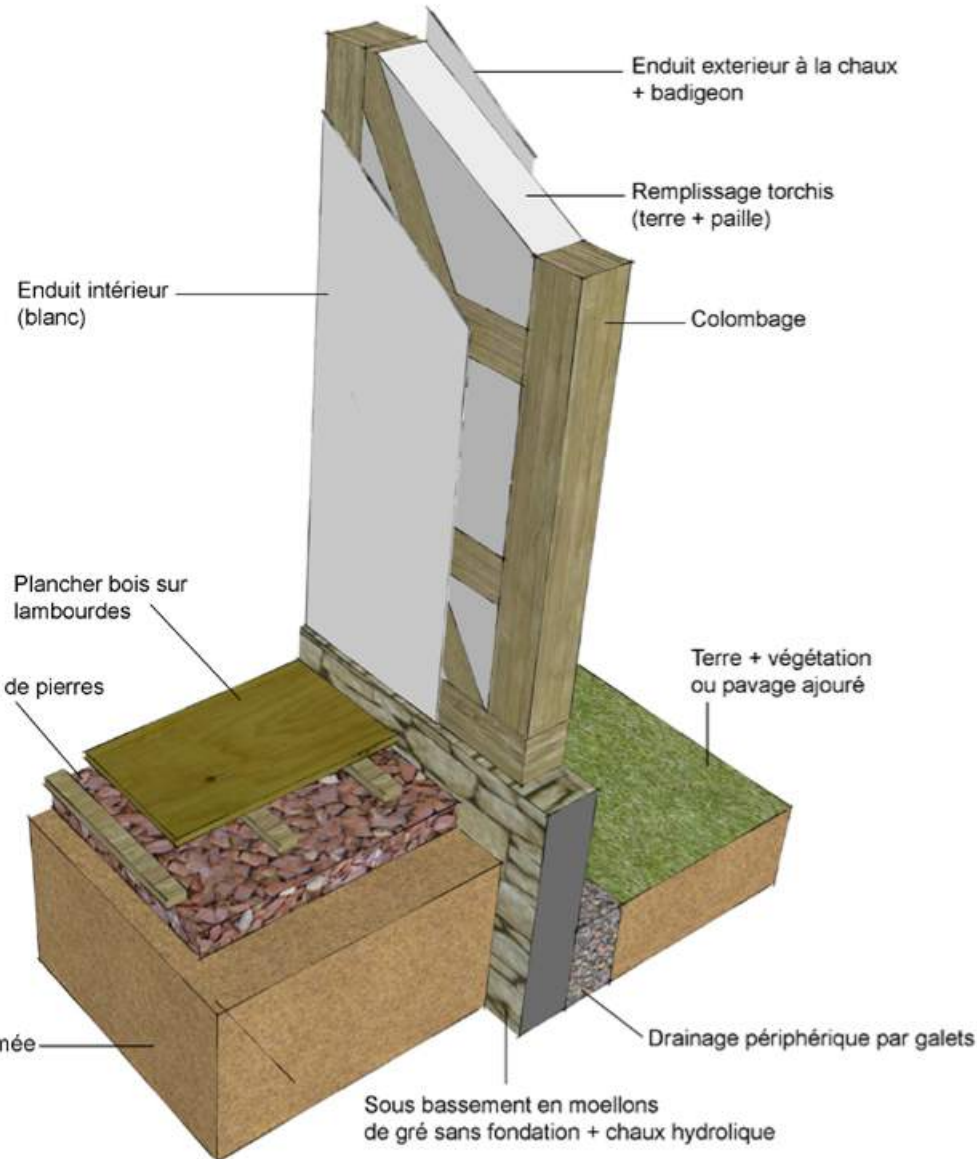
ÉCO-RÉNOVER UNE MAISON TRADITIONNELLE

# 1a- Dalle sur terre plein avec plancher bois

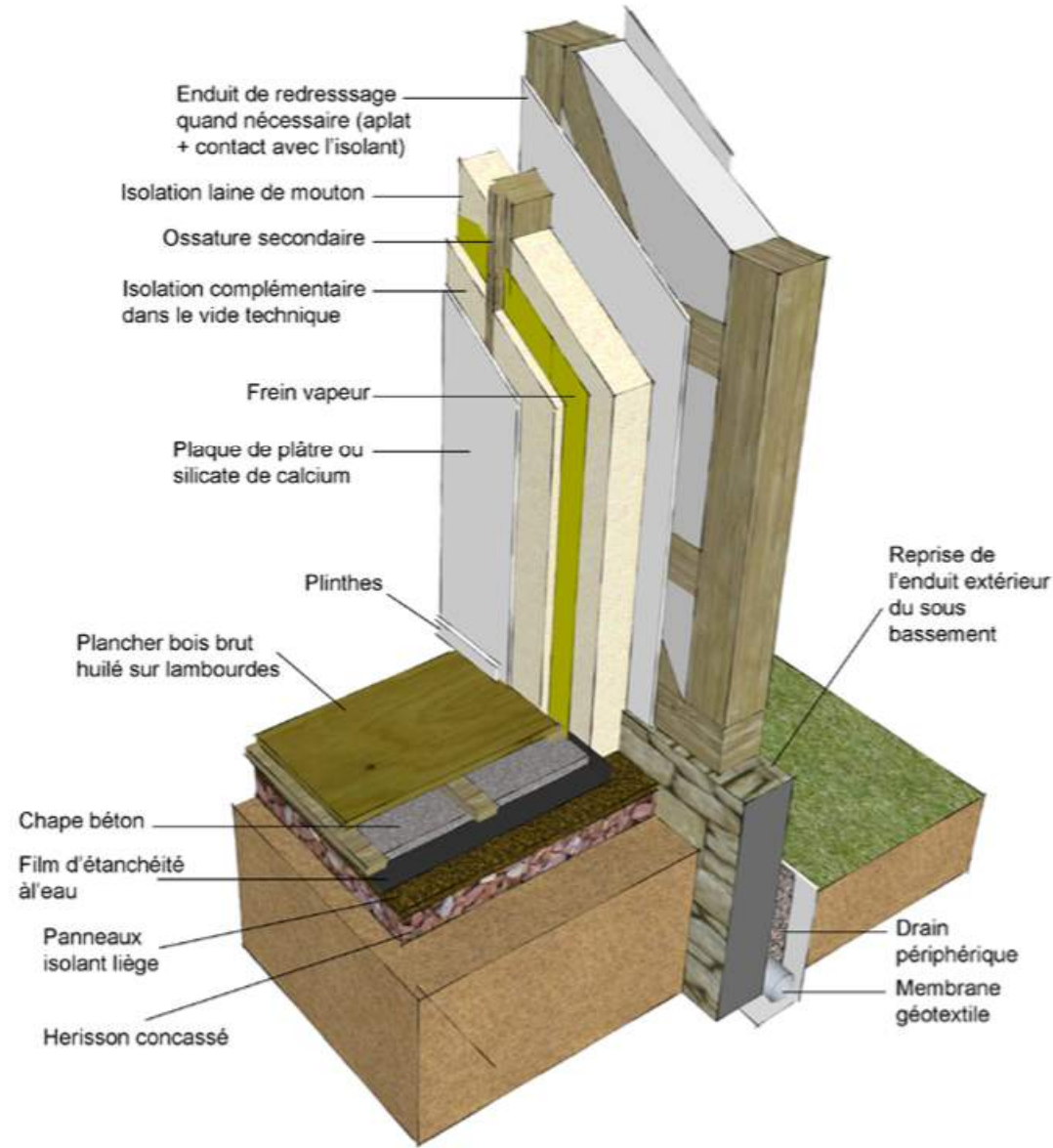


édition 2014

ÉCO-RÉNOVER UNE MAISON TRADITIONNELLE



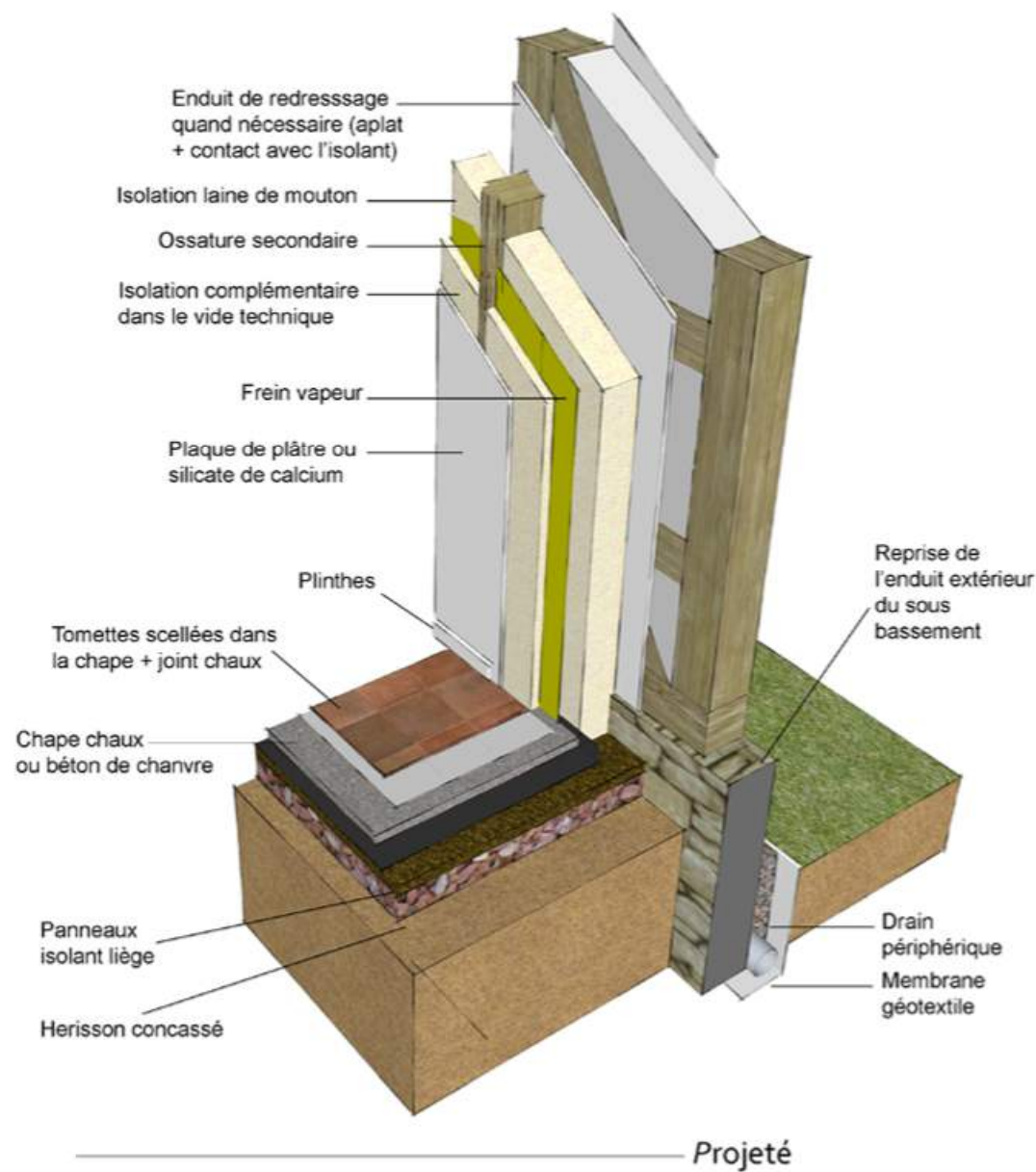
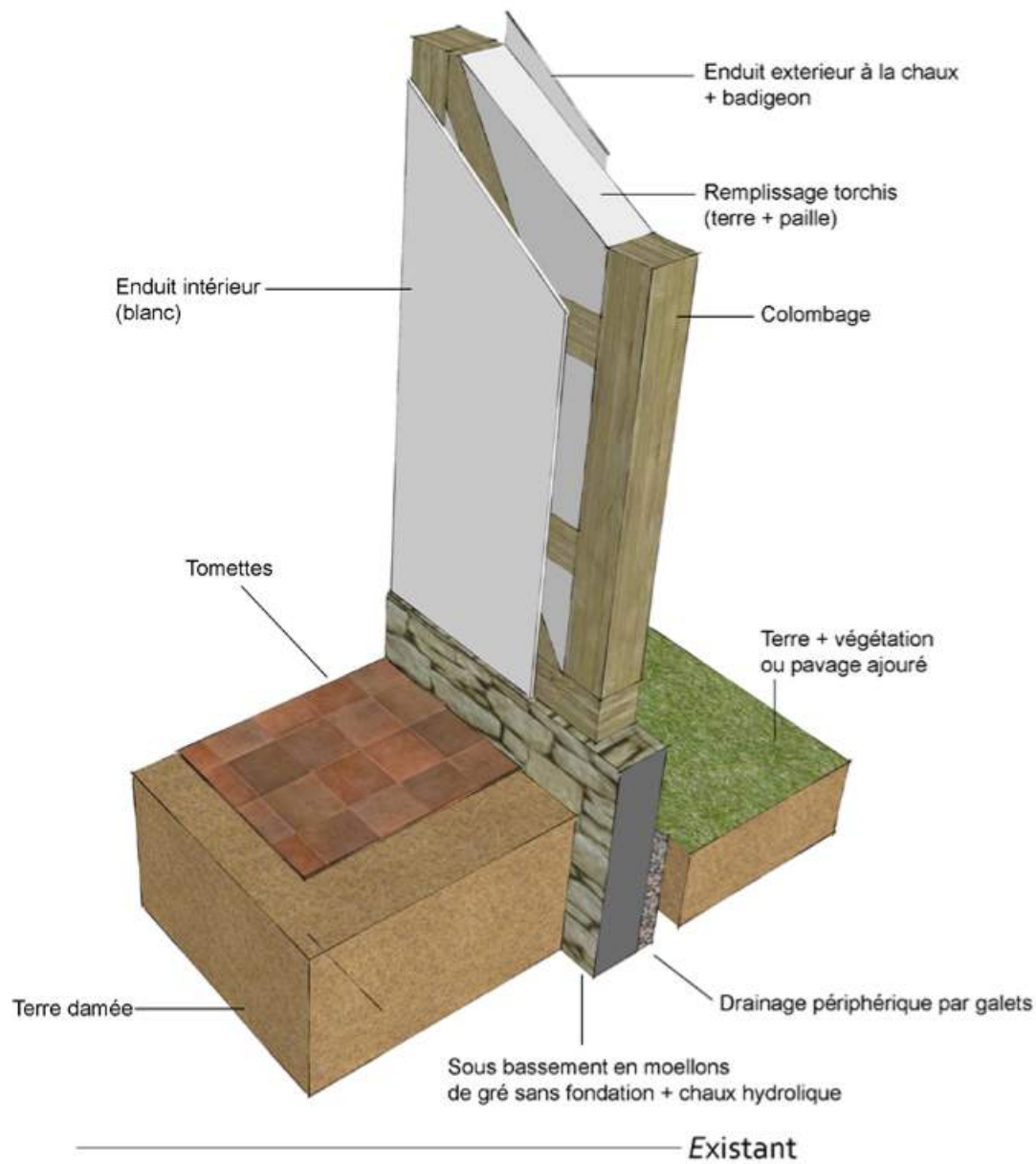
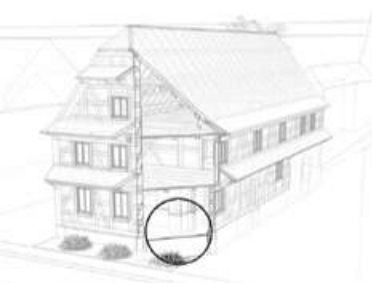
Existant



Projeté

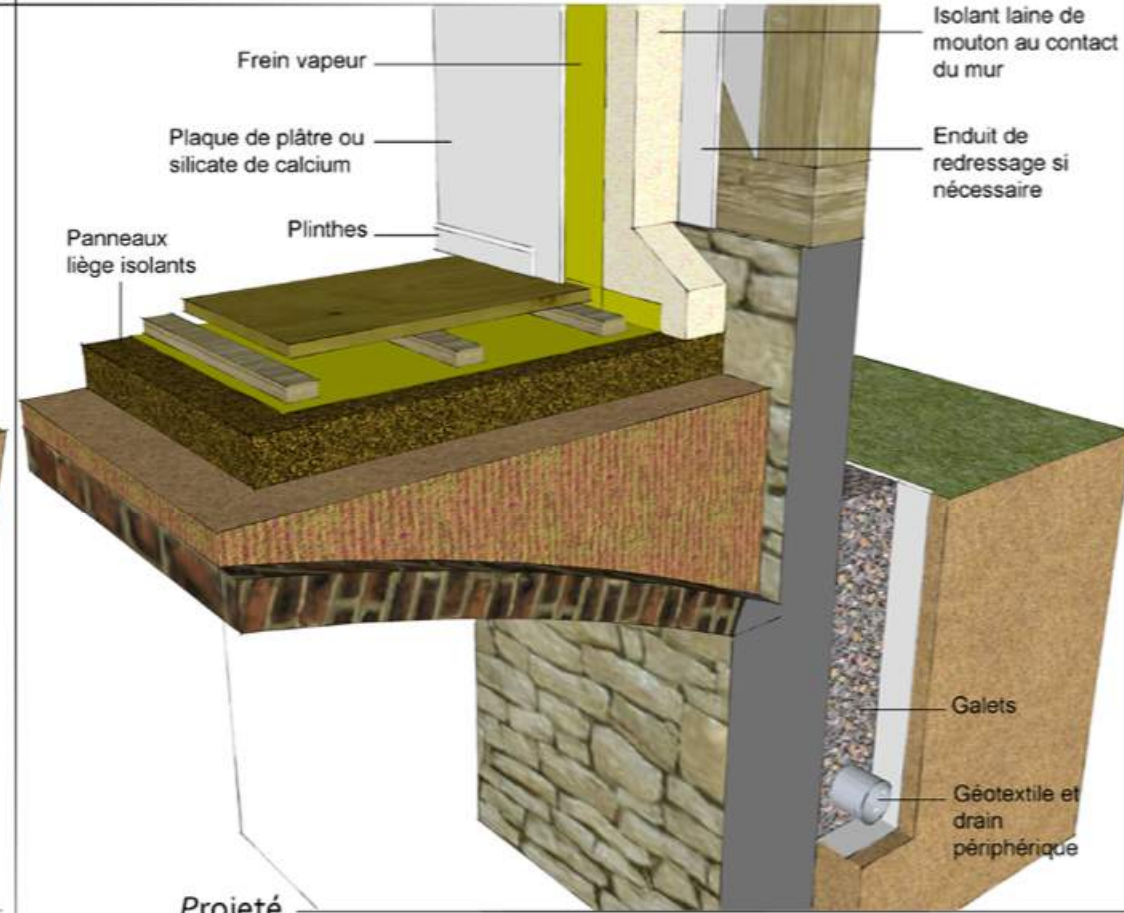
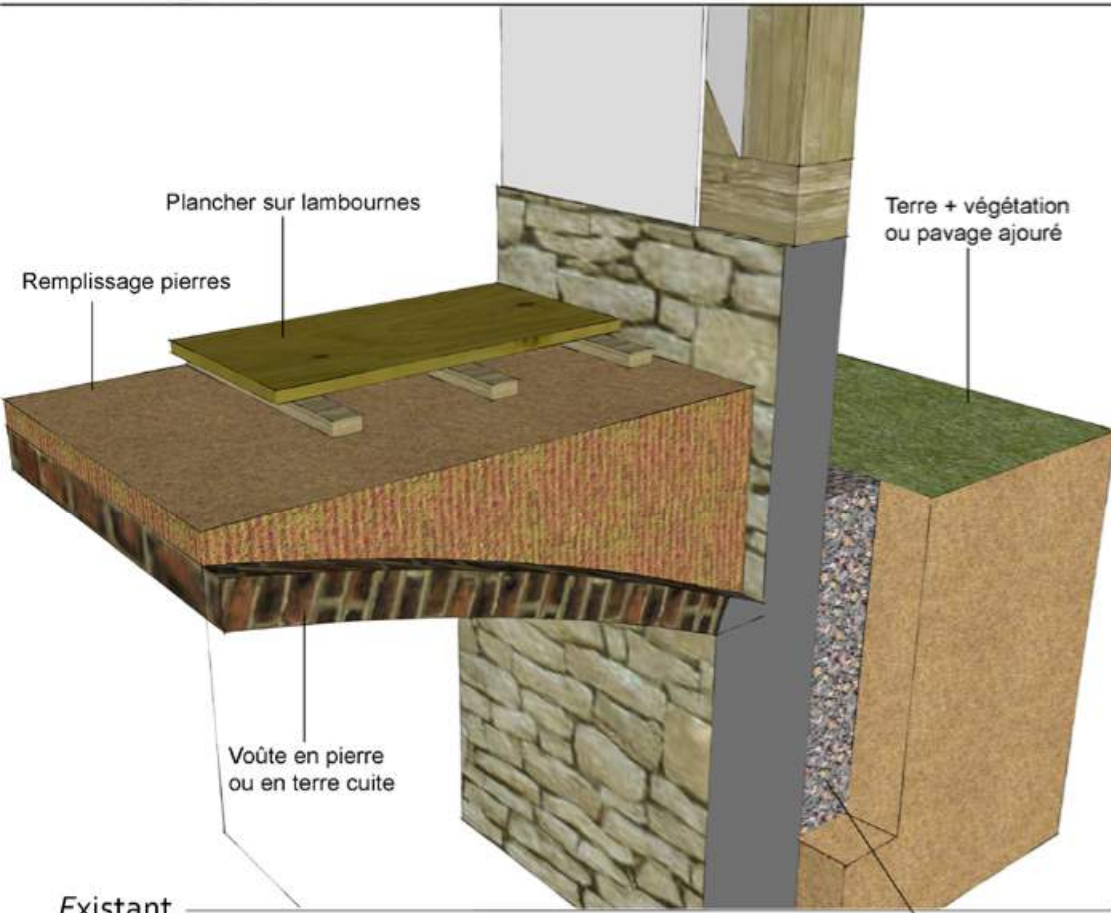


# 1b- Dalle sur terre plein avec carrelage / tommettes





# 1c- Dalle sur cave

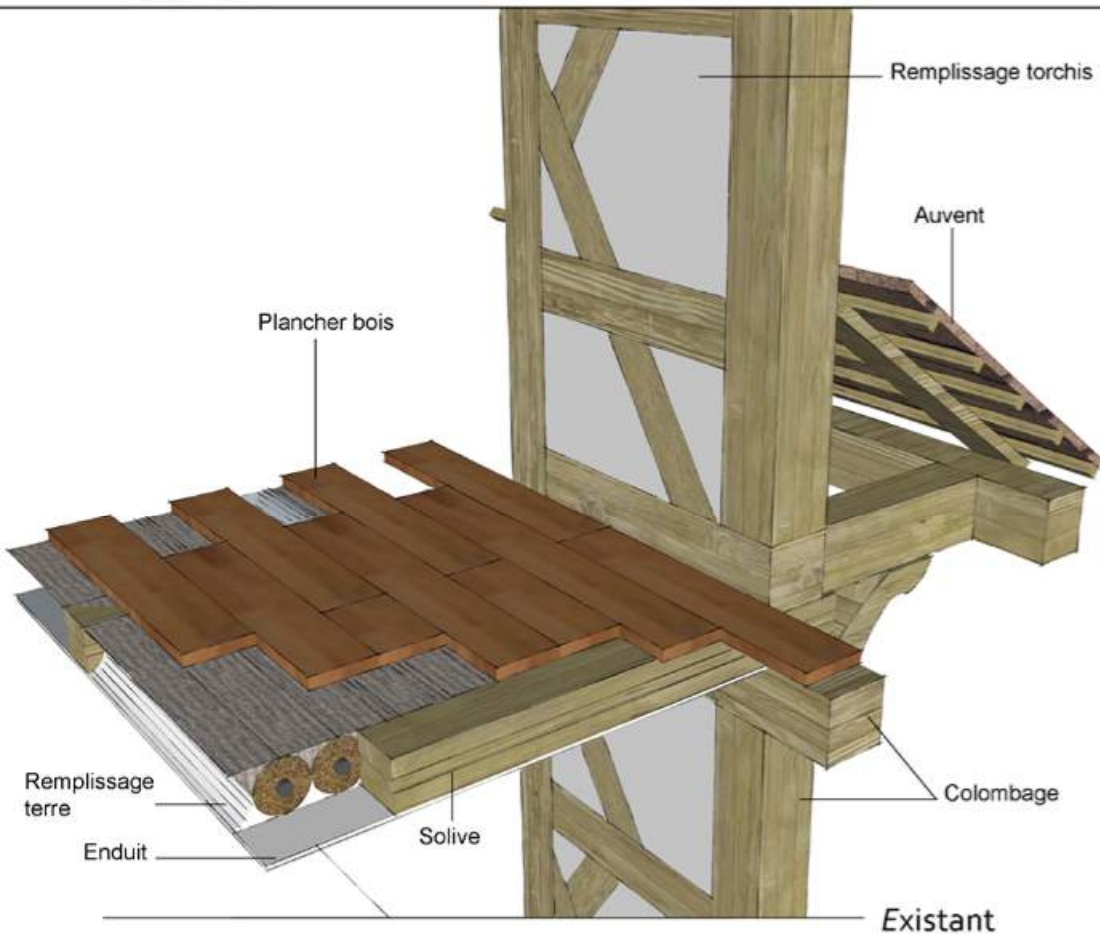
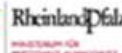




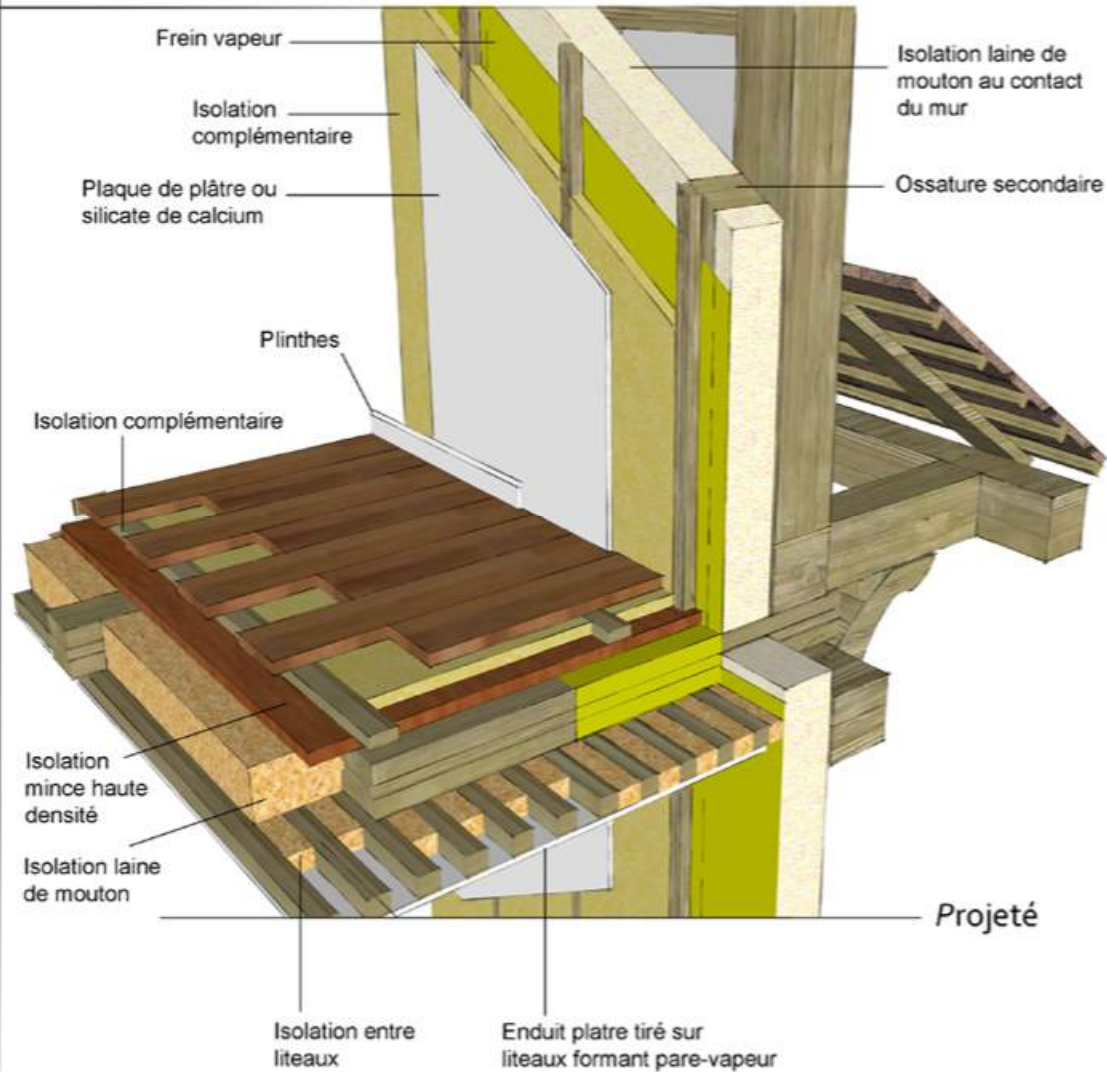
# 1d- Liaison mur / plancher

édition 2014

ÉCO-RÉNOVER UNE MAISON TRADITIONNELLE



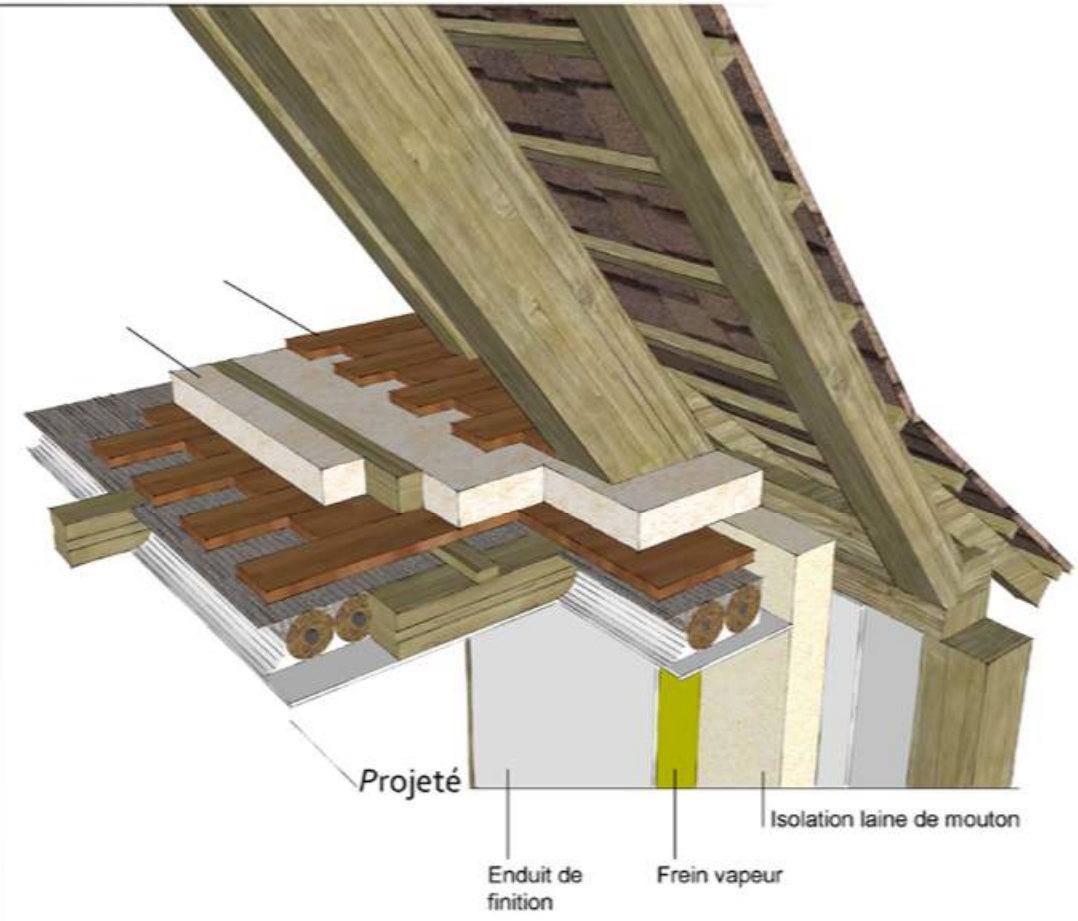
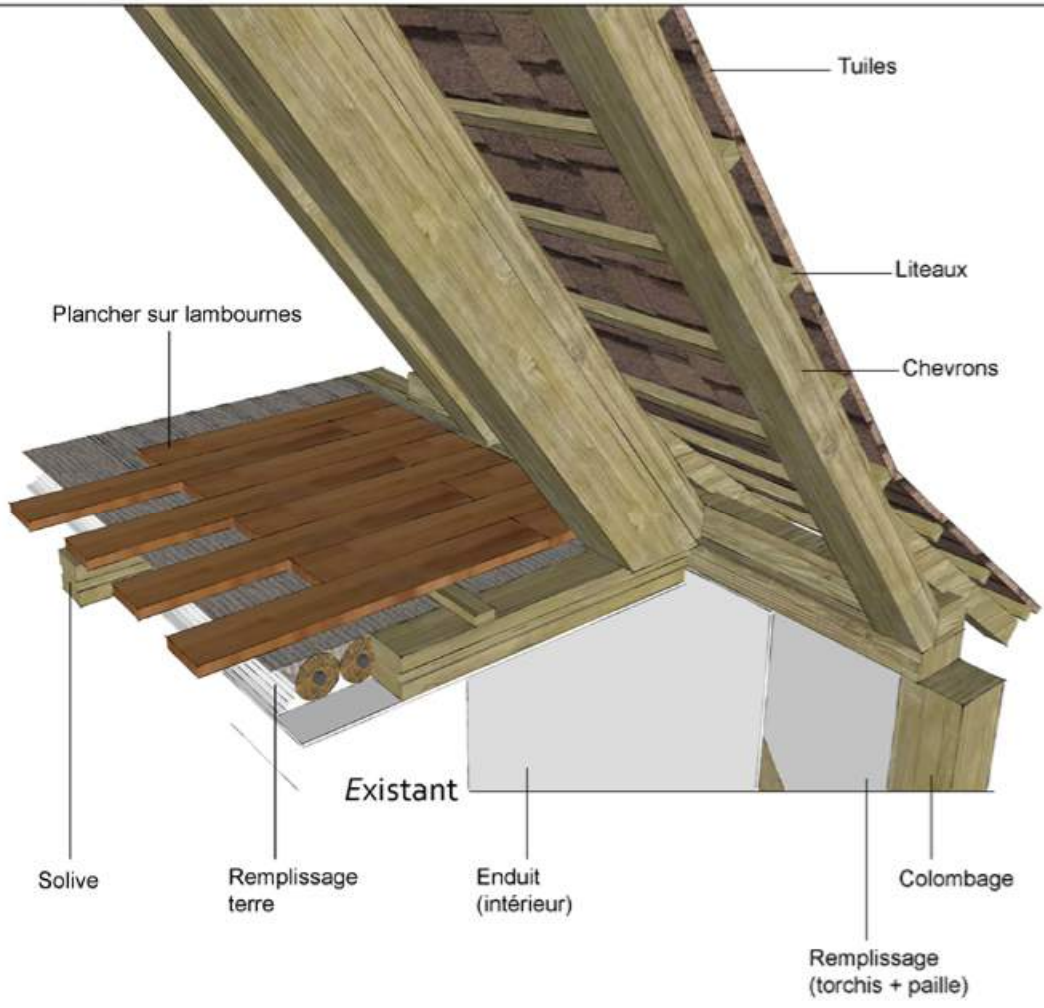
Existant



Projeté



# 1e- Planchers sous comble







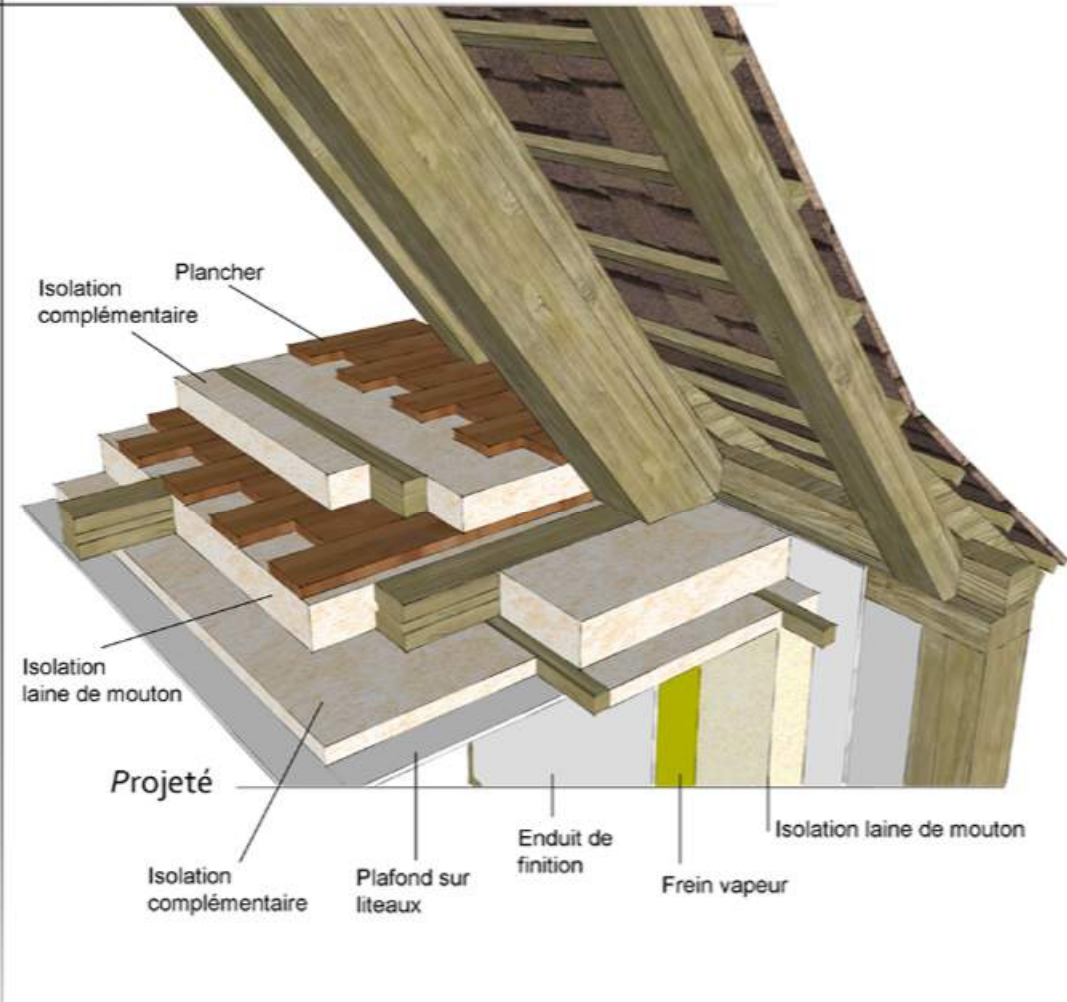
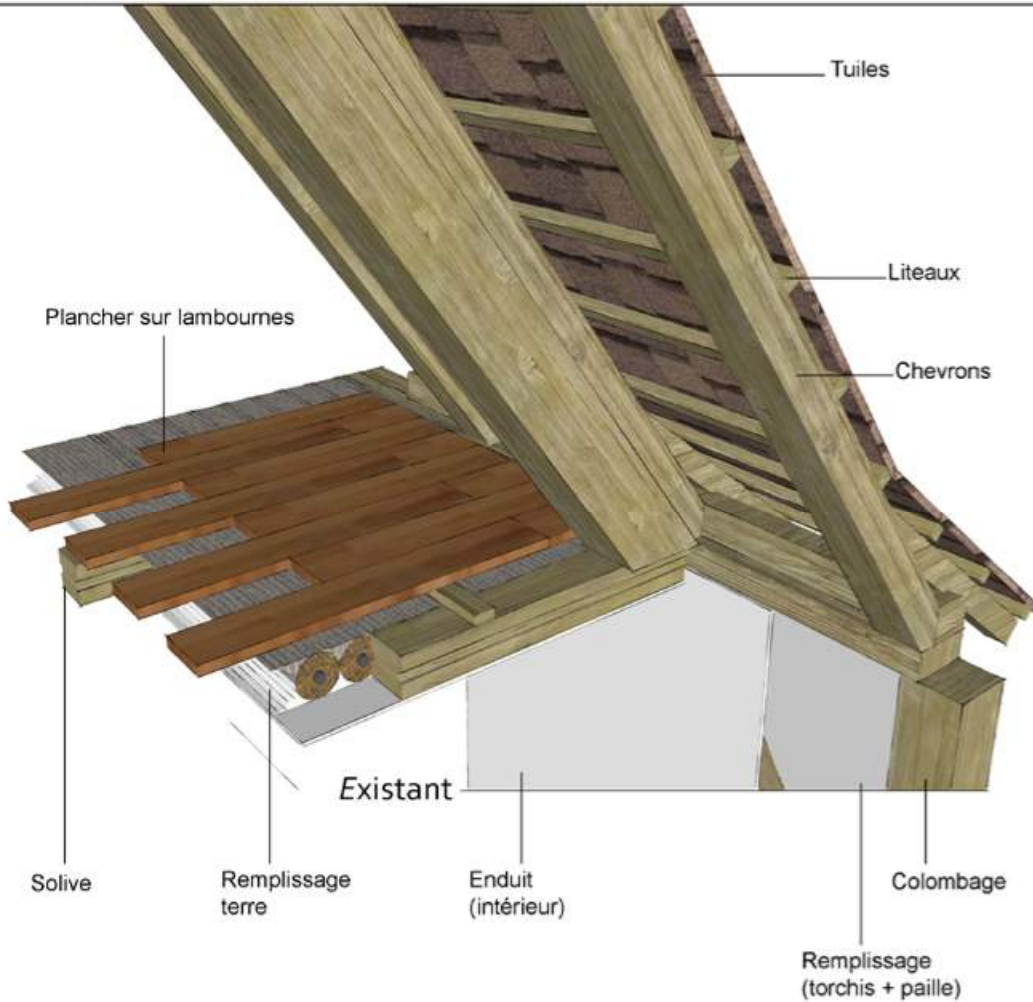
# 1f- Planchers sous comble

édition 2014

ÉCO-RÉNOVER UNE MAISON TRADITIONNELLE



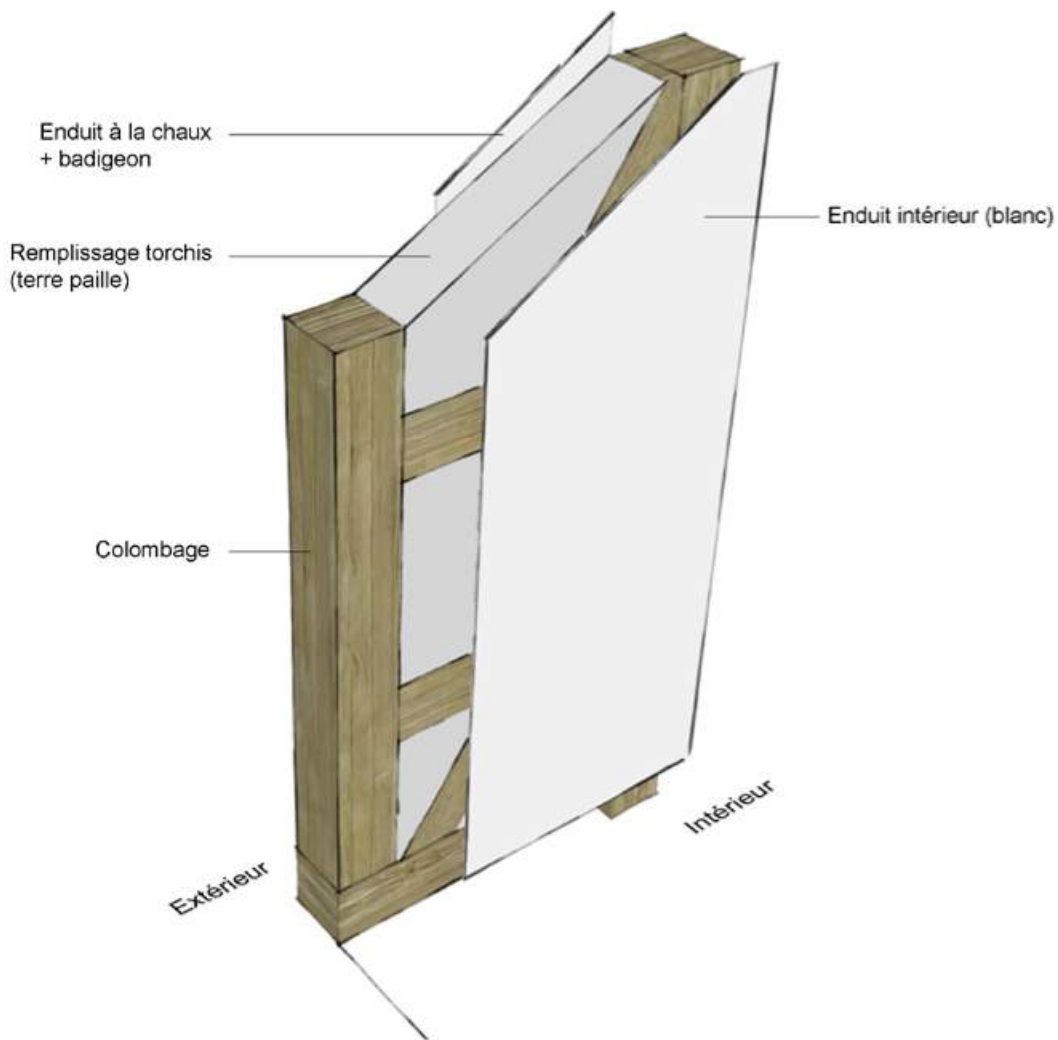
Coopérer en faveur du Patrimoine - Tous acteurs de l'habitat  
 Appel 2010 - axe 4 - calls to projects 2010 & 2011  
 Patrimoine.fr/est/est\_patrimoine/est\_patrimoine.html



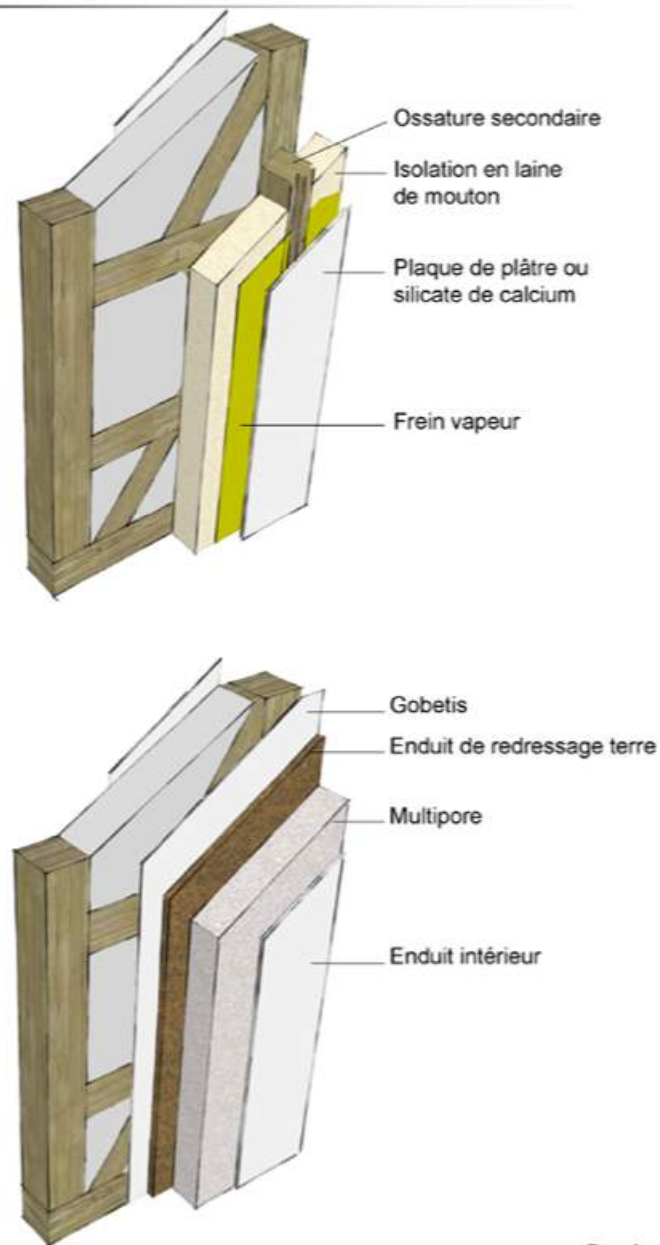
## 2a- Murs à pans de bois

édition 2014

ÉCO-RÉNOVER UNE MAISON TRADITIONNELLE



Existant



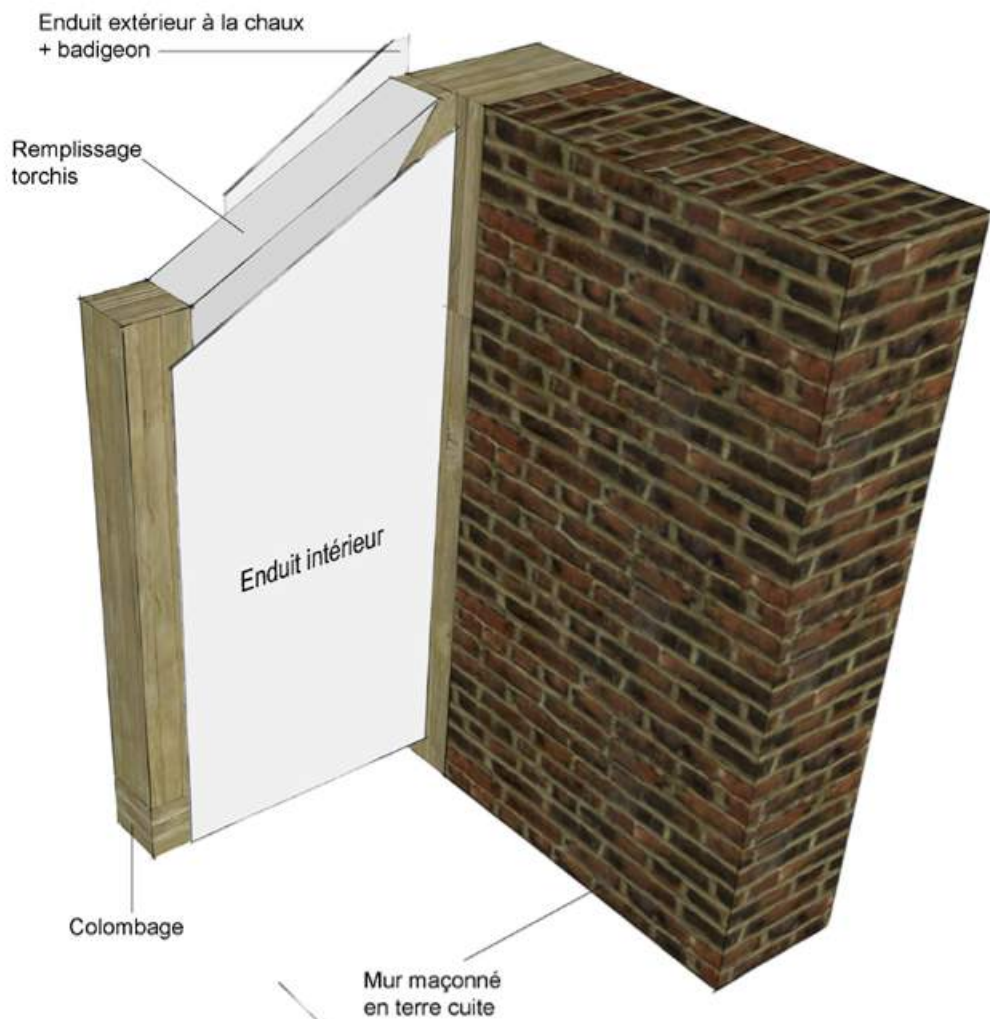
Projeté



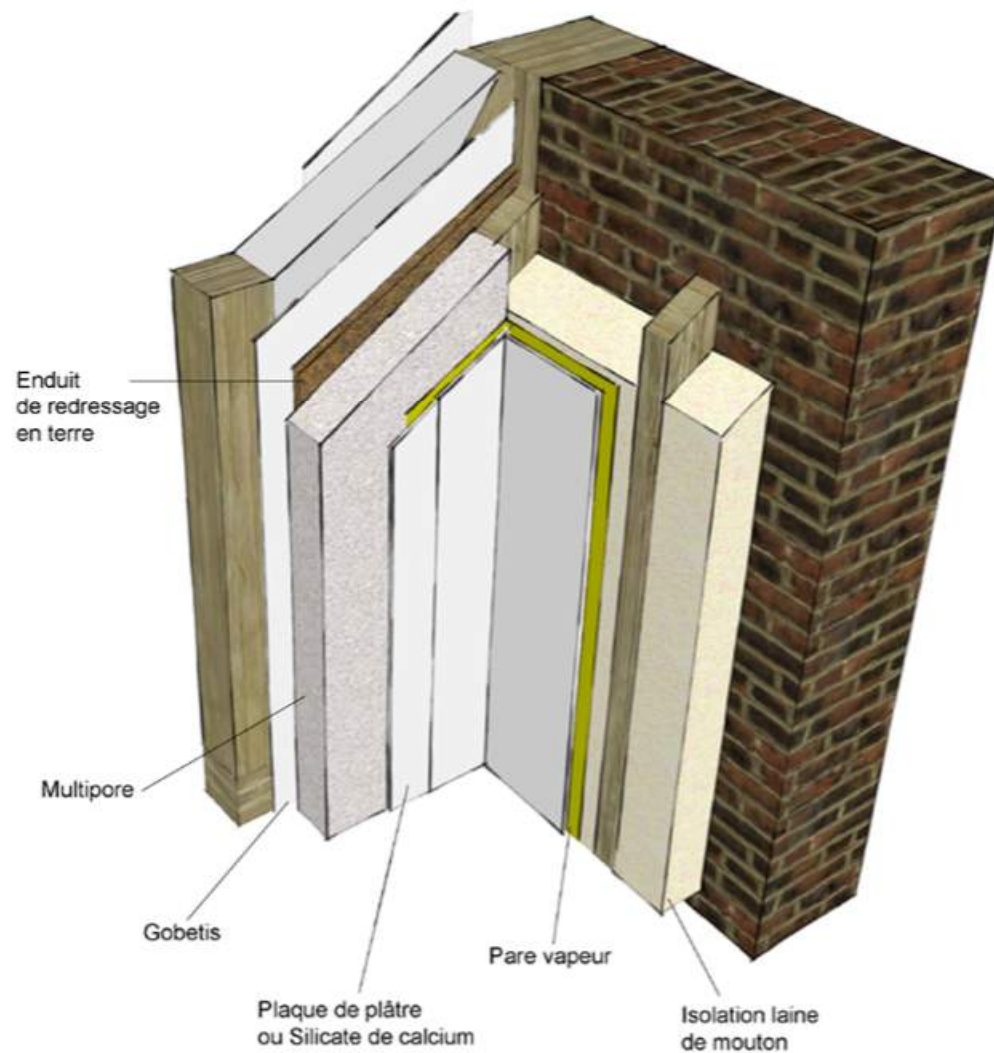
## 2b- Murs d'angle

édition 2014

ÉCO-RÉNOVER UNE MAISON TRADITIONNELLE



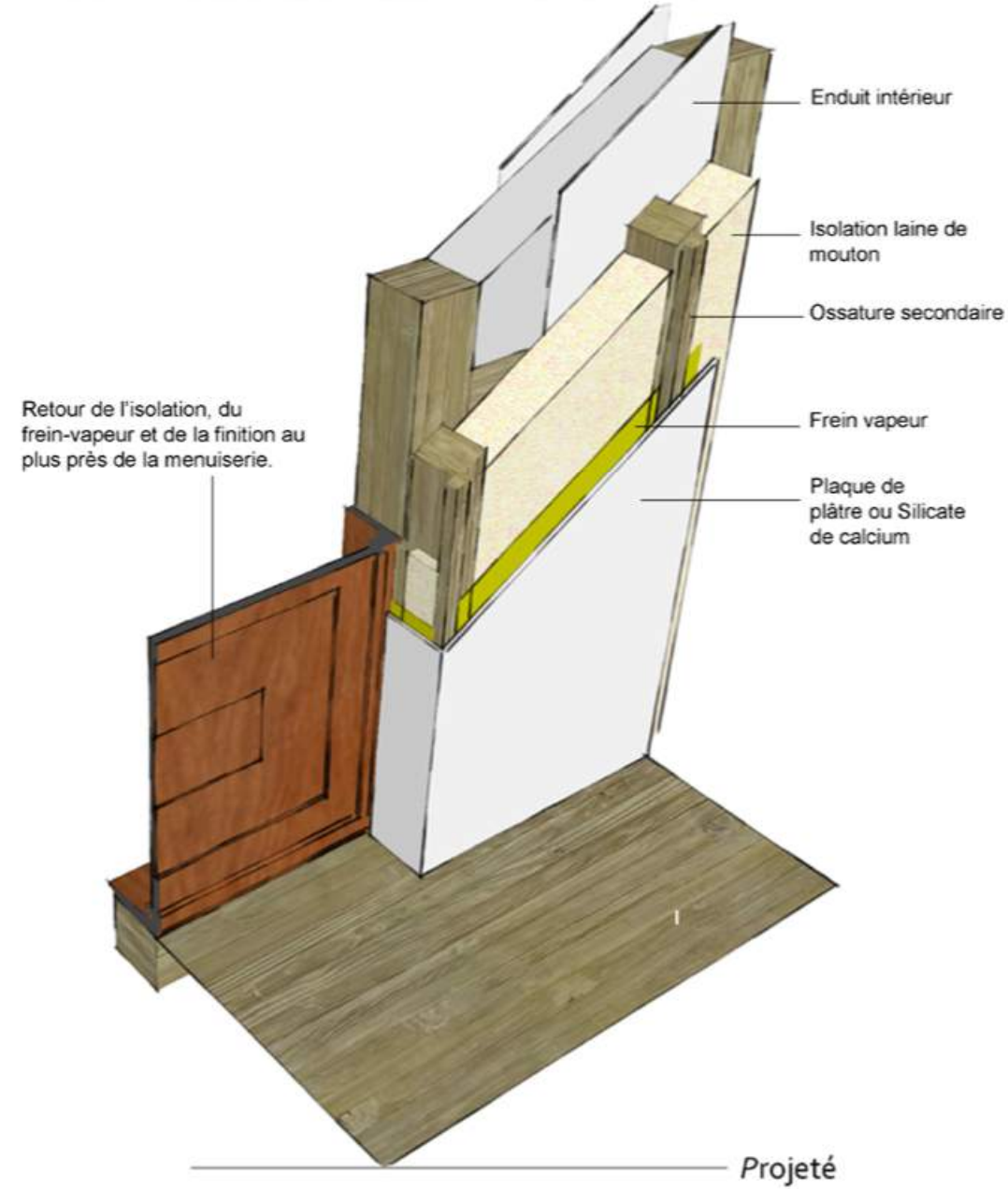
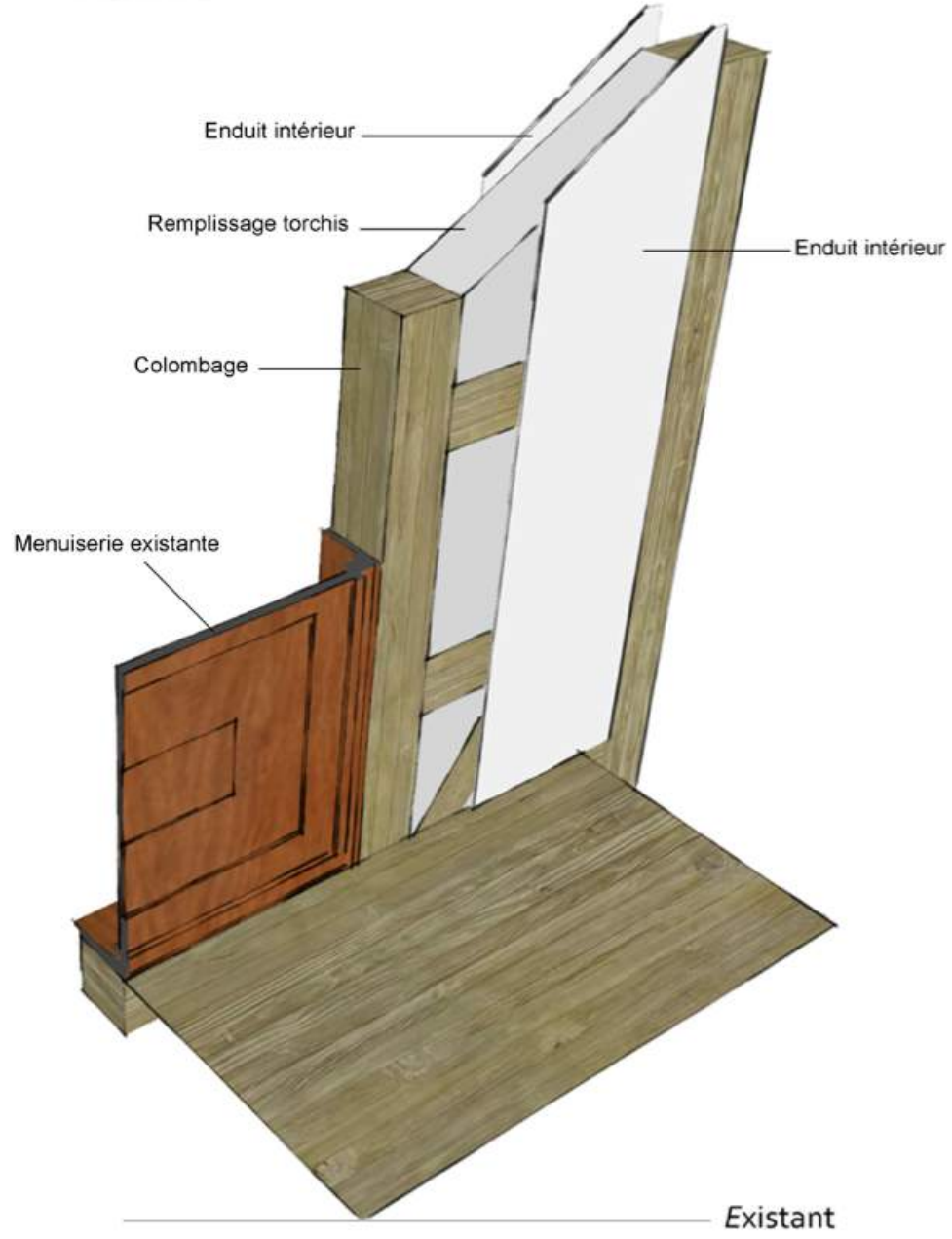
Existant



Projeté



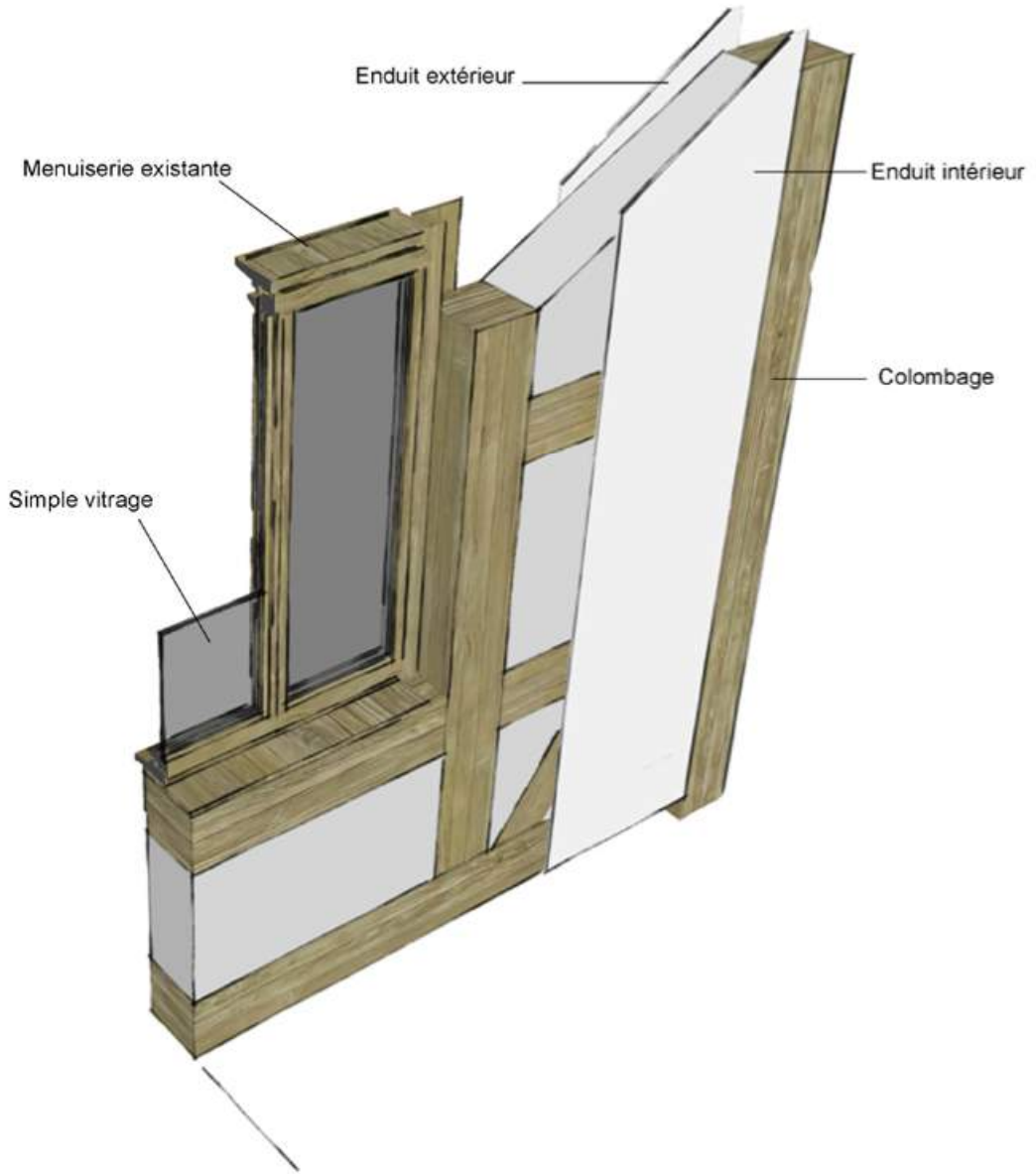
# 3- Ouvertures - portes



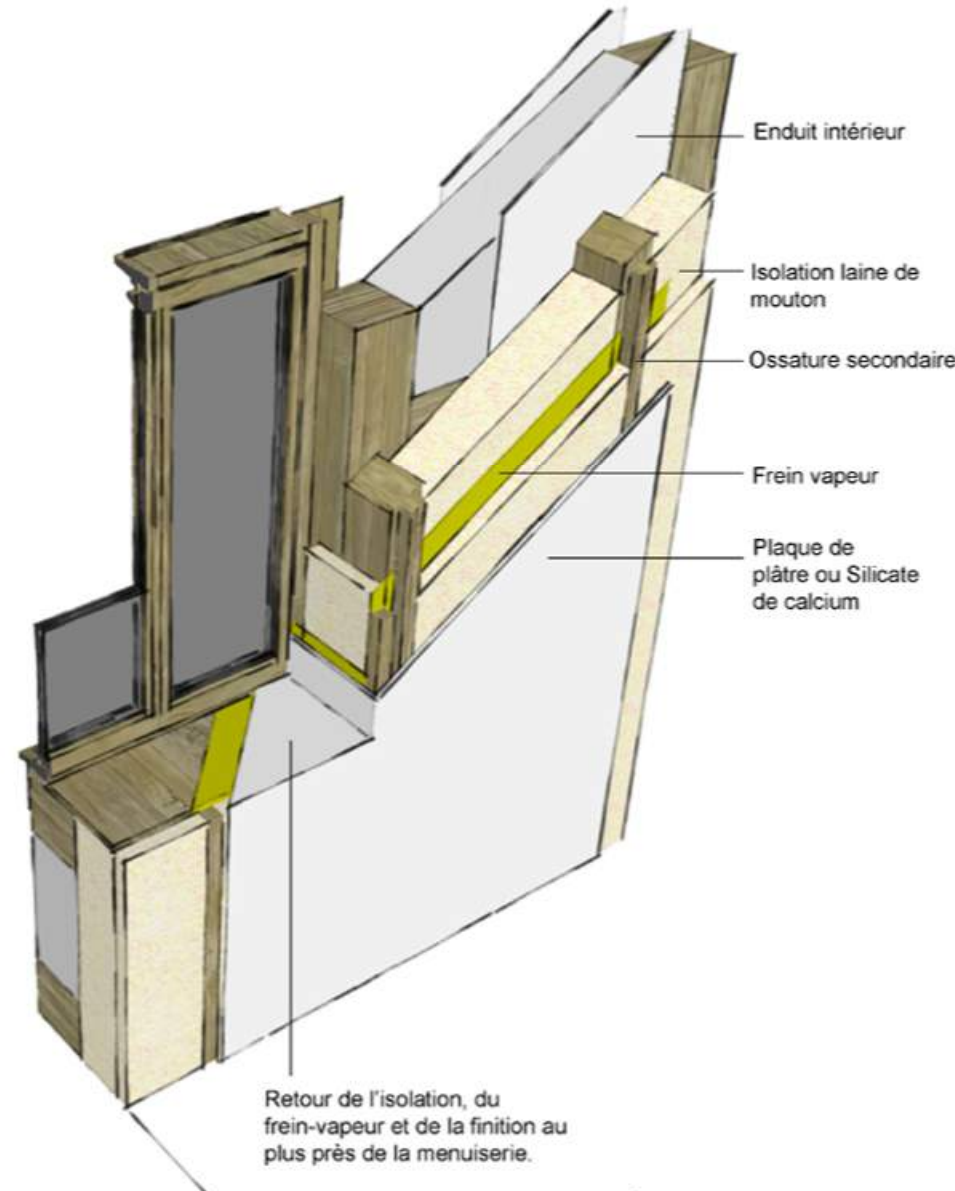




# 3- Ouverture - fenêtre



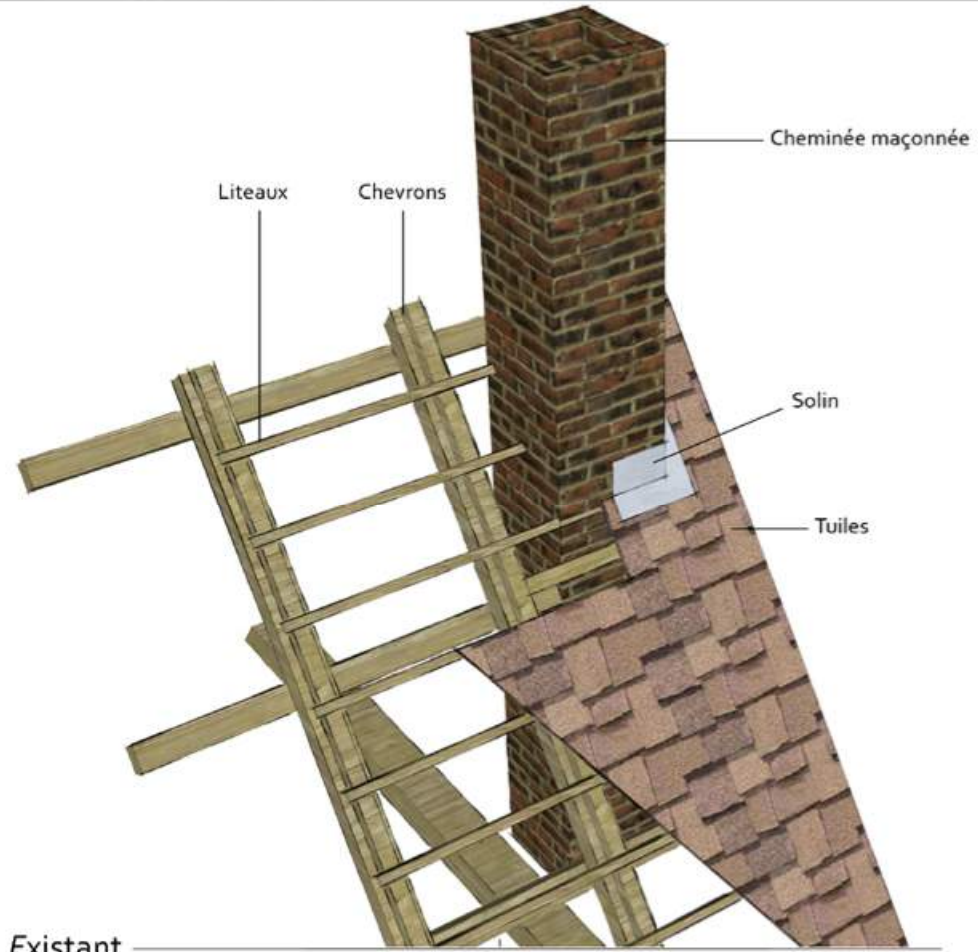
Existant



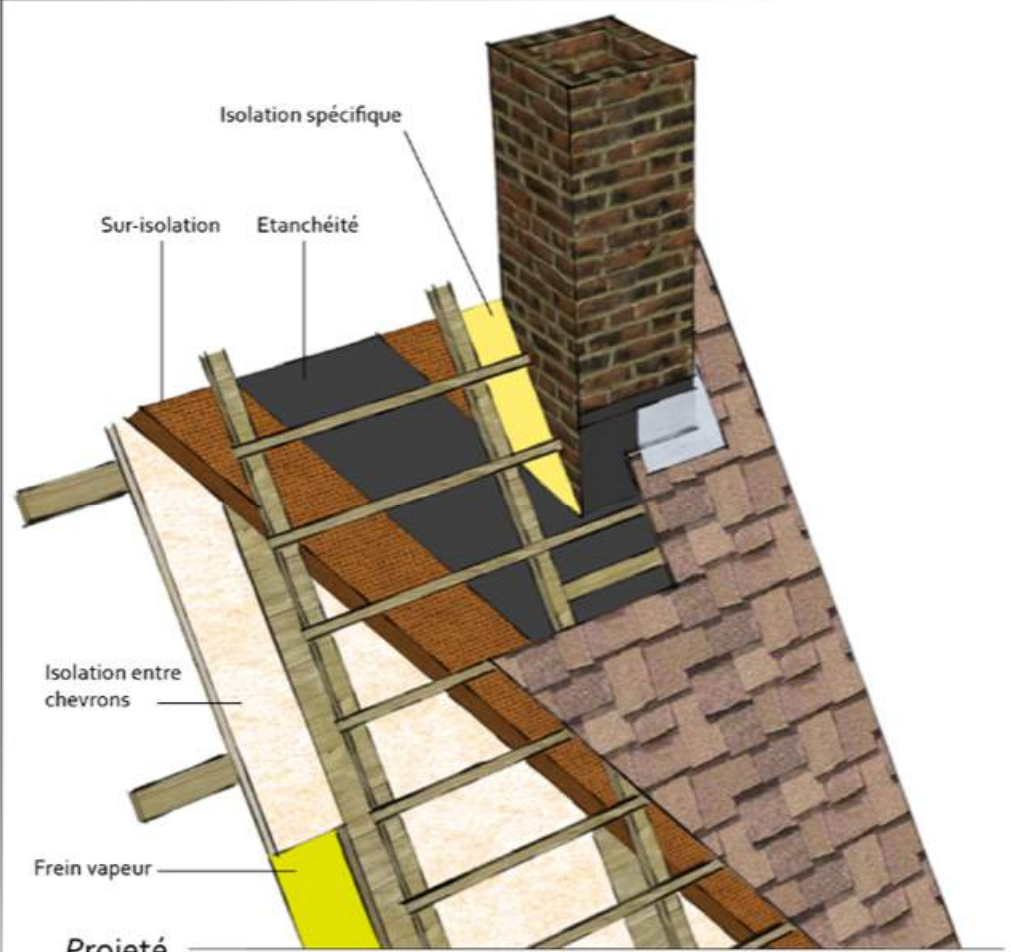
Projeté



# 4- Cheminée



Existant



Projeté